



Bosch Professional



BOSCH

ALL INFORMATION IN ONE HAND.

Maximize productivity and efficiency with the Bosch Measuring Tools app via Bluetooth connectivity.



Download these apps now for free!



Measure On

Work efficiently with your Bosch laser range finders. Sketch floor plans, add photos, insert measurements and notes with this app.



iOS



Android

Works with:



GLM 50-27 CG



GLM 100-25 C



GLM 150 C



Leveling Remote

Enables you to conveniently control the laser without having to even touch it, thereby increasing productivity and efficiency in your daily leveling tasks.



iOS



Android

Works with:



GCL 2-50 CG



GLL 3-80 CG



Thermal App

Convenient documentation of all temperature measurements from the Bosch thermal imaging camera via smartphone or tablet.



iOS



Android

Works with:



GIS 1000 C



GTC 400 C



GTC 600 C

BECONNECTED APP – ALL INFORMATION IN ONE HAND, WITH ACCESS OF ALL EXTRA BENEFITS

Introducing BeConnected - an app that keeps all the important information you need about your Bosch professional power tools and measuring tools at your fingertips. It lets you work smarter, faster and safer. With BeConnected, you're always a tap away from finding more information and getting help from us. Functions include scanning of code to register your warranty, hot deals for timely updates on latest promotions, points reward, referrals, gift redeem and coupon offered by us.

Download Bosch BeConnected App, start to manage your power tools and measuring tools to get easy access to benefits today.





LASER MEASURE

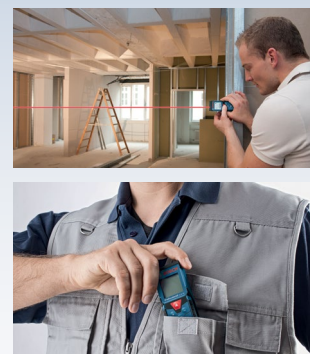
GLM 30-23 PROFESSIONAL

Simplify your Measurement



GLM 40 PROFESSIONAL

Simple and Easy with One Push



Accessories

- Pouch



Technical Specifications

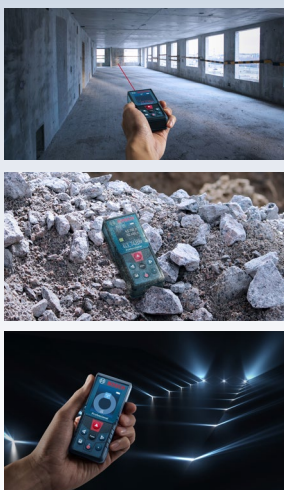
Laser class	2
Measuring range	0.15 – 30.00 m
Measuring accuracy	± 1.5 mm [^]
Unit of measurement	m/cm; ft/inch
Power supply	2 x 1.5 V LR03 (AAA)
Weight	0.1 kg
Scope of delivery	2 x AAA battery

Technical Specifications

Laser class	2
Measuring range	0.15 – 40.00 m
Measuring accuracy	± 2.0 mm [^]
Unit of measurement	m; ft
Power supply	2 x 1.5 V LR03 (AAA)
Weight	0.1 kg
Scope of delivery	2 x AAA battery

GLM 400 PROFESSIONAL

Conversion at One Press



GLM 50-23 G PROFESSIONAL

2-in-1 Laser Measure with Green Laser for Rough Jobsites



Accessories

- Pouch
- 3.7 V Battery
- Belt Clip
- BT 150

Technical Specifications

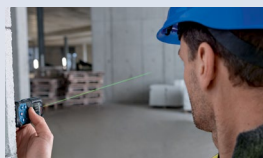
Laser class	2
Measuring range	0.05 – 40.00 m
Measuring accuracy	± 1.5 mm [^]
Unit of measurement	m/cm; ft/inch
Power supply	2 x 1.5 V LR03 (AAA)
Weight	0.1 kg
Scope of delivery	Hand strap, 2 x AAA battery

Technical Specifications

Laser class	2
Measuring range	0.05 – 50.00 m
Measuring accuracy	± 1.5 mm [^]
Measuring range (angle)	0 – 360° (4 x 90°)
Measuring accuracy (angle)	± 0.2°
Unit of measurement	m/cm; ft/inch
Power supply	2 x 1.5 V LR6 (AA)
Weight	0.2 kg
Scope of delivery	2 x AA battery

GLM 50-27 CG PROFESSIONAL

Robust and Reliable Laser Measure with Green Laser for Excellent Visibility



Accessories

- Pouch
- 3.7 V Battery
- Belt Clip
- BT 150

Technical Specifications

Laser class	2
Measuring range	0.05 – 50.00 m
Measuring accuracy	± 1.5 mm [^]
Measuring range (angle)	0 – 360° (4 x 90°)
Measuring accuracy (angle)	± 0.2°
Unit of measurement	m/cm; ft/inch
Power supply	2 x 1.5 V LR6 (AA)
Weight	0.2 kg
Scope of delivery	Pouch, 2 x AA battery

GLM 100-25 C PROFESSIONAL

Precise Laser Measure for Outdoor Measuring and Documenting



Accessories

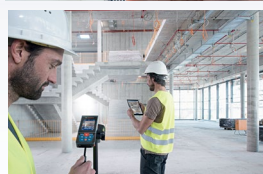
- Pouch
- BT 150

Technical Specifications

Laser class	2
Measuring range	0.08 – 100.00 m
Measuring accuracy	± 1.5 mm [^]
Measuring range (angle)	0 – 360° (4 x 90°)
Measuring accuracy (angle)	± 0.2°
Unit of measurement	m/cm; ft/inch
Power supply	3 x 1.5 V LR6 (AA)
Weight	0.2 kg
Scope of delivery	Pouch, 3 x AA battery

GLM 150 C PROFESSIONAL

Long Range Laser Measure Applicable for All Surroundings with Documentation



Accessories

- Pouch
- BT 150

Technical Specifications

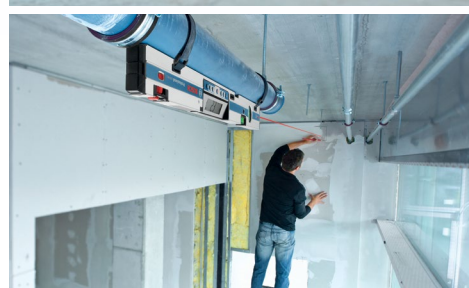
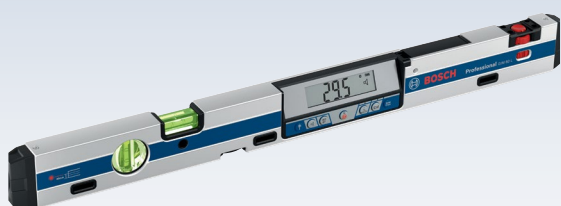
Laser class	2
Measuring range	0.08 – 150.00 m
Measuring accuracy	± 1.5 mm [^]
Measuring range (angle)	0 – 360° (4 x 90°)
Measuring accuracy (angle)	± 0.2°
Unit of measurement	m/cm; ft/inch
Power supply	3 x 1.5 V LR6 (AA)
Weight	0.2 kg
Scope of delivery	Pouch, hand strap, 3 x AA battery



INCLINOMETER

GIM 60 L PROFESSIONAL

Laser-accurate Incline Transfer Over Longer Distances



Technical Specifications

Laser class	2
Length	60 cm
Measuring range	0 – 360° (4 x 90°)
Measuring accuracy	± 0.05° (0°/90°); ± 0.2° (1°-89°)
Laser range	30 m
Power supply	4 x 1.5 V LR6 (AA)
Weight	0.9 kg
Scope of delivery	Protective bag, 4 x AA battery



ANGLE MEASURER

GAM 220 PROFESSIONAL

Precise and Easy Angle Measurement



Technical Specifications

Arm length	40 cm
Measuring range	0 – 220°
Measuring accuracy	± 0.1°
Power supply	4 x 1.5 V LR6 (AA)
Weight	1.3 kg
Scope of delivery	Protective bag, 4 x AA battery





POINT LASER

GPL 3 G PROFESSIONAL

Robust and Compact 3-point Laser with Highly Visible Green Laser Points



Technical Specifications

Laser class	2
Projection	3 points
Working range	up to 30 m
Accuracy	$\pm 0.35 \text{ mm/m}^\wedge$; $\pm 0.7 \text{ mm/m}^\wedge$ (bottom point)
Self-levelling range	$\pm 4^\circ$
Power supply	2 x 1.5 V LR6 (AA)
Weight	0.4 kg
Scope of delivery	Pouch, 2 x AA battery

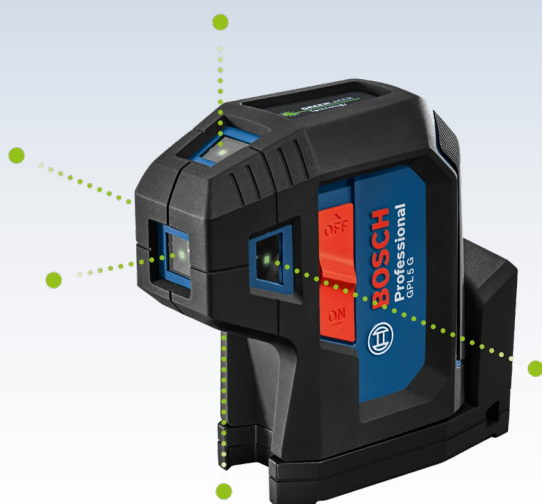


Accessories

- BT 150

GPL 5 G PROFESSIONAL

Robust and Compact 5-point Laser with Highly Visible Green Laser Points



Technical Specifications

Laser class	2
Projection	5 points
Working range	up to 30 m
Accuracy	$\pm 0.35 \text{ mm/m}^\wedge$; $\pm 0.7 \text{ mm/m}^\wedge$ (bottom point)
Self-levelling range	$\pm 4^\circ$
Power supply	2 x 1.5 V LR6 (AA)
Weight	0.4 kg
Scope of delivery	Pouch, 2 x AA battery



Accessories

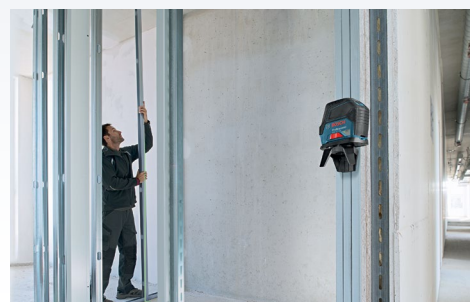
- BT 150

COMBI LASER



GCL 2-15 G PROFESSIONAL

Combi Green Laser Level with Better Visibility



Technical Specifications

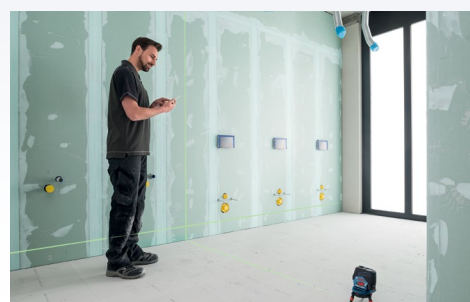
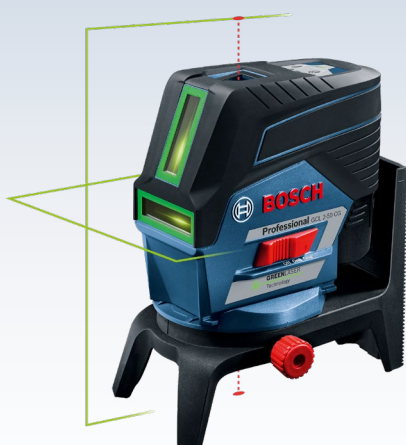
Laser class	2
Projection	2 lines; 2 points
Working range	up to 15 m (line); 10 m (point)
Accuracy	$\pm 0.3 \text{ mm/m}^{\wedge}$ (line); $\pm 0.7 \text{ mm/m}^{\wedge}$ (point)
Self-levelling range	$\pm 4^{\circ}$
Power supply	3 x 1.5 V LR6 (AA)
Weight	0.5 kg
Scope of delivery	Carrying case, pouch, RM 1, ceiling clamp, target plate, 3 x AA battery

Accessories

- RM 1
- BT 150
- BT 150-5/8"
- Laser Glasses Green

GCL 2-50 CG PROFESSIONAL

Optimum Visibility Connected with Smart Functions



Technical Specifications

Laser class	2
Projection	2 lines; 2 points
Working range	up to 50 m (line); 10 m (point)
Accuracy	$\pm 0.3 \text{ mm/m}^{\wedge}$ (line); $\pm 0.7 \text{ mm/m}^{\wedge}$ (point)
Self-levelling range	$\pm 4^{\circ}$
Power supply	4 x 1.5 V LR6 (AA) / 12 V Li-ion / 10.8 V Li-ion
Weight	0.6 kg
Scope of delivery	Carrying case, pouch, RM 2, target plate, AA1, 4 x AA battery

Accessories

- LR 7
- Mounting Clamp
- BM 1
- RM 2
- RM 3
- RC 2
- BT 150/BT 150-5/8"
- BT 350
- Laser Glasses Green
- Target Plate
- 12 V Li-ion
- 10.8 V Li-ion



LINE LASER

GLL 3-60 XG PROFESSIONAL

3 x 360° Green Line Laser – All-round Levelling Solution



Technical Specifications

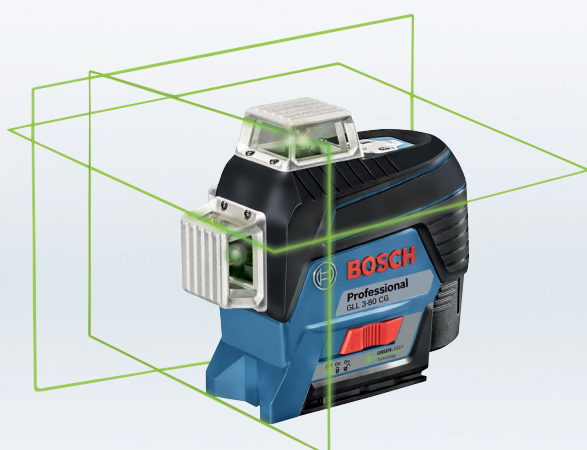
Laser class	2
Projection	3 x 360° lines
Working range	up to 60 m (radius)
Accuracy	± 0.3 mm/m^
Self-levelling range	± 4°
Power supply	4 x 1.5 V LR6 (AA)
Weight	0.8 kg
Scope of delivery	Carrying case, pouch, target plate, 4 x AA battery

Accessories

- LR 7
- Mounting Clamp
- BM 1
- BT 150
- BT 150-5/8"
- BT 350
- Laser Glasses Green
- Target Plate

GLL 3-80 CG PROFESSIONAL

Green Line Laser with Superior Visibility in 3 x 360° - Simply Connected



Technical Specifications

Laser class	2
Projection	3 x 360° lines
Working range	up to 120 m (radius)
Accuracy	± 0.2 mm/m^
Self-levelling range	± 4°
Power supply	4 x 1.5 V LR6 (AA) / 12 V Li-ion / 10.8 V Li-ion
Weight	0.9 kg
Scope of delivery	Carrying case, BM 1, ceiling plate, pouch, target plate, AA1, 4 x AA battery

Accessories

- LR 7
- Mounting Clamp
- BM 1
- BT 150
- BT 150-5/8"
- BT 350
- Laser Glasses Green
- Target Plate
- 12 V Li-ion
- 10.8 V Li-ion

GLL 50-15 XG PROFESSIONAL

Better line visibility for increased work efficiency in everyday interior levelling jobs



NEW



Technical Specifications

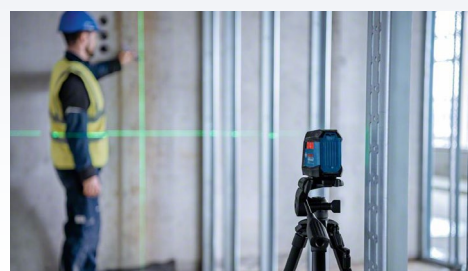
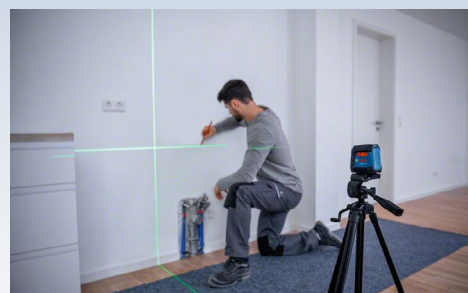
Laser class	2
Projection	5 x lines, 1 vertical dot
Working range	up to 50 m (w/ LR7 laser receiver)
Accuracy	$\pm 0.2 \text{ mm/m}^{\wedge}$ horizontal/ $\pm 0.3 \text{ mm/m}^{\wedge}$ vertical
Self-levelling range	$\pm 3^{\circ}$
Power supply	4 x 1.5 V LR6 (AA)
Weight	0.76 kg
Scope of delivery	Carrying strap, Pouch, 4 x AA battery

Accessories

- LR 7
- Mounting Clamp
- BM 1
- BT 150
- BT 150-5/8"
- BT 350
- Laser Glasses Red
- Target Plate

GLL 50 G PROFESSIONAL

Simple and Compact for Rugged Environment



Technical Specifications

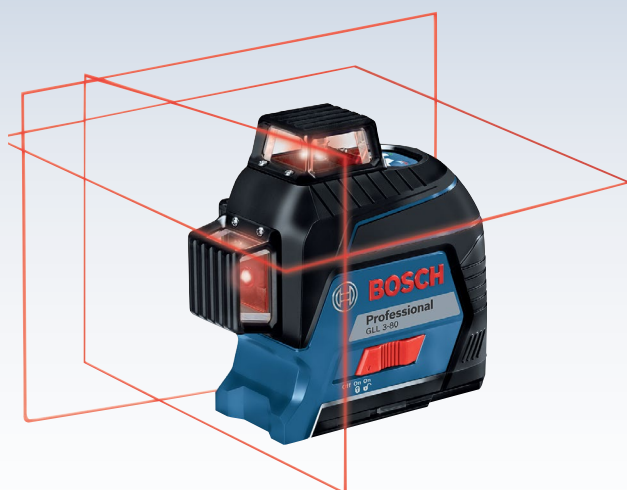
Laser class	2
Projection	2 lines
Working range	up to 15 m
Accuracy	$\pm 0.6 \text{ mm/m}^{\wedge}$
Self-levelling range	$\pm 3.5^{\circ}$
Power supply	2 x 1.5 V LR6 (AA)
Weight	0.3 kg
Scope of delivery	Pouch, 2 x AA battery

Accessories

- 3.7 V Battery
- BT 150

GLL 3-80 PROFESSIONAL

3 x 360° for Visibility on a New Level



Technical Specifications

Laser class	2
Projection	3 x 360° lines
Working range	up to 120 m (radius)
Accuracy	± 0.3 mm/m^
Self-levelling range	± 4°
Power supply	4 x 1.5 V LR6 (AA)
Weight	0.8 kg
Scope of delivery	Carrying case, pouch, target plate, 4 x AA battery

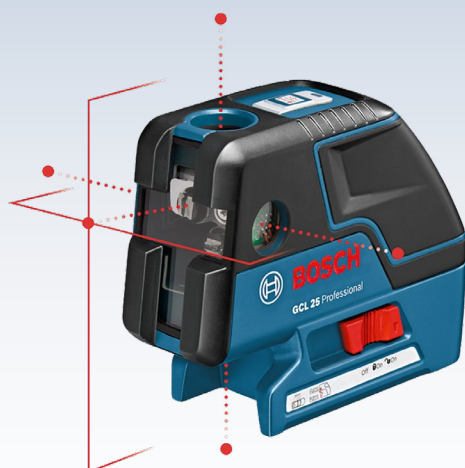


Accessories

- LR 6
- LR 7
- Mounting Clamp
- BM 1
- BT 150
- BT 150-5/8"
- BT 350
- Laser Glasses Red
- Target Plate

GCL 25

easy solution for all levelling and transfer jobs over short distances



Technical Specifications

Laser class	2
Projection	3 x 360° lines
Working range	up to 120 m (radius)
Accuracy	± 0.3 mm/m^
Self-levelling range	± 4°
Power supply	4 x 1.5 V LR6 (AA)
Weight	0.8 kg
Scope of delivery	Carrying case, pouch, target plate, 4 x AA battery



Accessories

- LR 6
- LR 7
- Mounting Clamp
- BM 1
- BT 150
- BT 150-5/8"
- BT 350
- Laser Glasses Red
- Target Plate



ROTATION LASER

GRL 300 HVG PROFESSIONAL

Outstanding Visibility for Indoor Applications



Technical Specifications

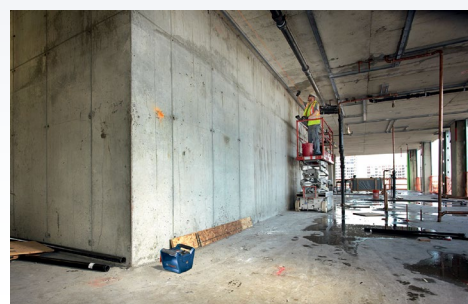
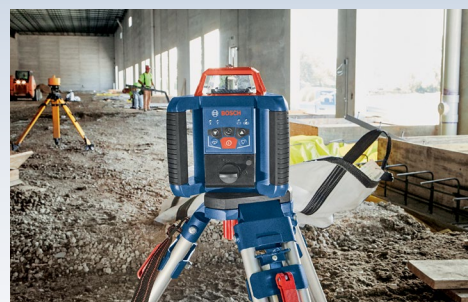
Laser class	3R
Working range	up to 300 m (diameter)
Accuracy	± 0.1 mm/m [^]
Self-levelling range	± 5°
Power supply	2 x 1.5 V LR20 (D)
Weight	1.8 kg
Scope of delivery	Carrying case, LR 1G, RC 1, WM 4, bracket, target plate, laser viewing glasses, 2 x D battery, 1 x 9V battery, 1 x AA battery

Accessories

- LR 1 G
- Mounting Clamp
- BT 160
- BT 170 HD
- Laser Glasses Green
- Target Plate
- GR 240
- GR 500

GRL 350 HV PROFESSIONAL

Rotational Laser for Horizontal and Vertical Application with Manual Dual Slope



Technical Specifications

Laser class	3R
Working range	up to 350 m (diameter)
Accuracy	± 0.05 mm/m [^] (horizontal); ± 0.1 mm/m [^] (vertical)
Self-levelling range	± 5°
Power supply	2 x 1.5 V LR20 (D)
Weight	1.8 kg
Scope of delivery	Carrying case, LR 30, RB 30, WM 24, target plate, laser viewing glasses, 2 x D battery, 1 x 9V battery

Accessories

- WM 4
- RC 4
- BT 160
- BT 170 HD
- Laser Glasses Red
- Target Plate
- GR 240
- GR 500



OPTICAL LEVEL

GOL 26 D PROFESSIONAL

Robust and Reliable – Ideal for Long Distances



Technical Specifications

Magnification	26 x
Working range	100 m
Accuracy	± 1.6 mm at 30 m
Weight	1.5 kg
Scope of delivery	Carrying case, adjusting pin, hex key, lens cover, plumb bob



Accessories

- BT 160
- BT 170 HD
- GR 240
- GR 500

GOL 32 D PROFESSIONAL

Robust Solution for Precise Levelling at Long Distances



Technical Specifications

Magnification	32 x
Working range	120 m
Accuracy	± 1.0 mm at 30 m
Weight	1.5 kg
Scope of delivery	Carrying case, adjusting pin, hex key, lens cover, plumb bob



Accessories

- BT 160
- BT 170 HD
- GR 240
- GR 500



THERMO DETECTOR

GIS 500 PROFESSIONAL

Press and Go - Temperature on Hand



GIS 1000 C PROFESSIONAL

All-round Thermo Detector for Precise and Versatile Measurements



Accessories

- AA 1
- 12 V Li-ion
- 10.8 V Li-ion

Technical Specifications

Laser class	2
Measuring range	-30 °C – +500 °C
Measuring accuracy	± 1.8 °C^ (0 to 100 °C)
Power supply	2 x 1.5 V LR6 (AA)
Weight	0.2 kg
Scope of delivery	Pouch, 2 x AA battery

Technical Specifications

Laser class	2
Measuring range	-40 °C – +1000 °C
Measuring accuracy	± 1.0 °C^ (0 to 100 °C)
Measuring accuracy (relative humidity)	± 2 %
Power supply	4x 1.5 VLR6 (AA) / 12 V Li-ion / 10.8 V Li-ion
Weight	0.6 kg
Scope of delivery	Carrying bag, AA 1, micro-USB cable, 4 x AA battery

GTC 400 C PROFESSIONAL

Detailed Visualization of Temperature Differences



Accessories

- AA 1
- 12 V Li-ion
- 10.8 V Li-ion

GTC 600 C PROFESSIONAL

Detailed Visualisation of Temperature Differences with Smart Documentation



Accessories

- 12 V Li-ion
- 10.8 V Li-ion

Technical Specifications

Measuring range	-10 °C – +400 °C
Measuring accuracy	± 3.0 °C^ (0 to 100 °C)
No. of measuring points	19,200
Field of view (FOV)	53 x 43°
Power supply	4x 1.5 VLR6 (AA) / 12 V Li-ion / 10.8 V Li-ion
Weight	0.5 kg
Scope of delivery	Carrying bag, AA 1, hand strap, micro-USB cable, 4 x AA battery

Technical Specifications

Measuring range	-20 °C – +600 °C
Measuring accuracy	± 2.0 °C^ (0 to 100 °C)
No. of measuring points	49,152
Field of view (FOV)	40° x 30°
Power supply	12 V Li-ion / 10.8 V Li-ion
Weight	0.5 kg
Scope of delivery	Carrying bag, USB-C cable



INSPECTION CAMERA

GIC 4-23 C PROFESSIONAL

High-Resolution Camera for Quick and Easy Inspection and Documentation



NEW



Technical Specifications

Length of camera cable	150 cm
Display resolution	800 x 480 px
Display size	4.3 "
Power supply	4 x 1.5 V LR6 (AA) / 12 V Li-ion / 10.8 V Li-ion
Weight	0.7 kg
Scope of delivery	Carrying bag, AA 1, 150 cm camera cable, hook, magnet, mirror, USB-C cable, 4 x AA battery



Accessories

- 3.5 m Cable,
- 1.5 m Dual Camera,
- 1.5 m (3.9mm) Cable
- AA 1
- 12 V Li-ion
- 10.8 V Li-ion

GIC 5-27 C PROFESSIONAL

High-Resolution Camera and Automatic Upright Viewing for In-depth Inspection and Documentation

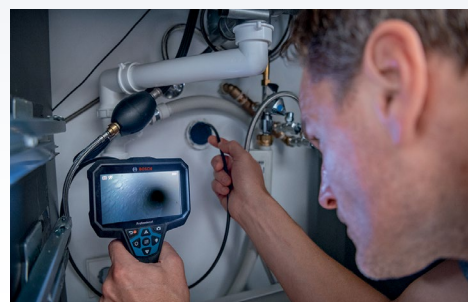


NEW



Technical Specifications

Length of camera cable	150 cm
Display resolution	1280 x 720 px
Display size	5 "
Power supply	4 x 1.5 V LR6 (AA) / 12 V Li-ion / 10.8 V Li-ion
Weight	0.7 kg
Scope of delivery	Carrying bag, AA 1, 150 cm camera cable, hook, magnet, mirror, 32GB microSD card, USB-C cable, 4 x AA battery



Accessories

- 3.5 m Cable,
- 1.5 m Dual Camera,
- 1.5 m (3.9mm) Cable
- AA 1
- 12 V Li-ion
- 10.8 V Li-ion



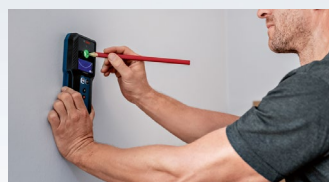
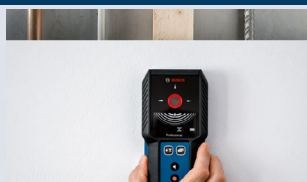
WALLSCANNER

GMS 120-27 PROFESSIONAL

Simple and Intuitive – Logical Favourite for Locating Objects Effectively



NEW



Technical Specifications

Max. detection depth	120 mm
Detection materials	metal, live cable, stud
Power supply	2x AA Battery / BA 3.7V Li-ion battery
Weight	0.3 kg
Scope of delivery	Pouch, 2x AA batteries

D-tect 120 PROFESSIONAL

Spot On All Common Objects



Accessories

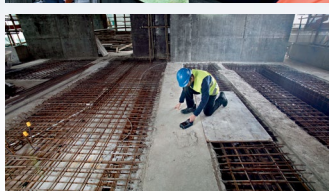
- AA 1
- 12 V Li-ion
- 10.8 V Li-ion

Technical Specifications

Max. detection depth	120 mm
Detection materials	metal, cable, water-filled plastic pipe, stud
Power supply	4 x 1.5 V LR6 (AA) / 12 V Li-ion / 10.8 V Li-ion
Weight	0.5 kg
Scope of delivery	Carrying bag, AA 1, 4 x AA battery

D-tect 200 C PROFESSIONAL

Scan and Spot the Unseen – Top Performance and Easy Documentation



Accessories


- AA 1
- 12 V Li-ion
- 10.8 V Li-ion



Technical Specifications

Max. detection depth	200 mm
Detection materials	metal, cable, plastic pipe, stud
Power supply	4 x 1.5 V LR6 (AA) / 12 V Li-ion / 10.8 V Li-ion
Weight	0.6 kg
Scope of delivery	Carrying bag, AA 1, handstrap, USB-C cable, 4 x AA battery

MEASURING TOOLS ACCESSORIES

Laser Receiver / Remote Control		Working range	Accuracy	Power supply	Weight	Suitable for
	LR 6	5 – 50 m	± 1 mm / ± 3 mm (fine / rough)	2 x 1.5 V LR03 (AAA)	0.1 kg	GLL 5-50 X, GLL 3-80
	LR 7	5 – 50 m	± 1 mm / ± 3 mm (fine / rough)	2 x 1.5 V LR6 (AA)	0.2 kg	GLL 5-50 X, GLL 3-60 XG, GLL 3-80, GLL 3-80 CG, GCL 2-50 CG
	LR 45	up to 300 m	± 1 mm / ± 2 mm / ± 3 mm / ± 5 mm / ± 7 mm / ± 10 mm	2 x 1.5 V LR6 (AA)	0.3 kg	GRL 300 HVG, GRL 350 HV, GRL 400 H
	Receiver Mounting Bracket	nil.	nil.	nil.	0.1 kg	LR 6, LR 7

Tripod		Working range	Tripod thread	Section	Weight	Suitable for
	BT 150	55 – 157 cm	1/4"	nil.	1.3 kg	GLM 400, GLM 500, GLM 50-23 G, GLM 50-27 CG, GLM 100-25 C, GLM 150-27 C, GLM 150 C, GPL 3 G, GPL 5 G, GCL 2-15 G, GCL 2-50 CG, GLL 1 P, GLL 30 G, GLL 3-60 XG, GLL 3-80, GLL 3-80 CG, GLL 50 G, GLL 12-22 G
	BT 150-5/8"	55 – 157 cm	5/8"	nil.	1.1 kg	GCL 2-15 G, GCL 2-50 CG, GLL 3-15 X, GLL 5-50 X, GLL 5-40 E, GLL 8-40 E, GLL 3-60 XG, GLL 3-80, GLL 3-80 CG
	BT 160	97 – 160 cm	5/8"	nil.	4.1 kg	GOL 26 D, GOL 32 D, GRL 300 HVG, GRL 350 HV, GRL 400 H, GRL 600 CHV
	BT 350	140 – 350 cm	nil.	3	2.5 kg	GCL 2-15 G, GCL 2-50 CG, GLL 3-60 XG, GLL 3-80 , GLL 3-80 CG
	GR 500	5.0 m	nil.	5	2.0 kg	GOL 26 D, GOL 32 D, GRL 300 HVG, GRL 350 HV, GRL 400 H, GRL 600 CHV

Mount		Weight	Suitable for
	RM 3	0.5 kg	GCL 2-50 CG
	BM 1	0.5 kg	GCL 2-15 G, GCL 2-50 CG, GLL 3-60 XG, GLL 3-80 , GLL 3-80 CG

Battery		Weight	Suitable for
	BA 3.7V	0.03 kg	GLM 50-23, GLM 50-27 CG, GLL 50 G, GMS 120-27